

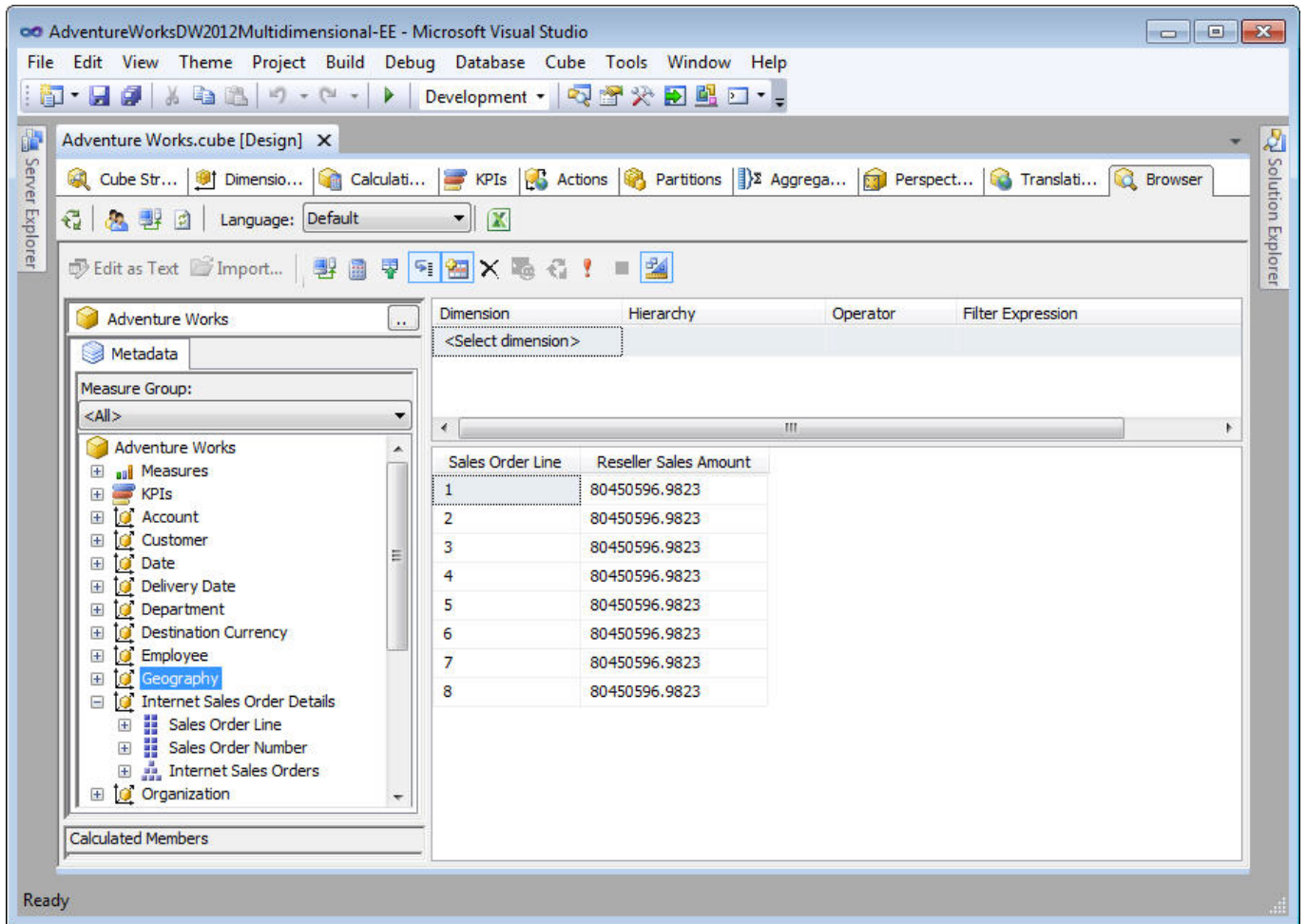


DOWNLOAD



DOWNLOAD

[Microsoft Visual Studio Olap Cube How To Use A Member](#)



[Microsoft Visual Studio Olap Cube How To Use A Member](#)

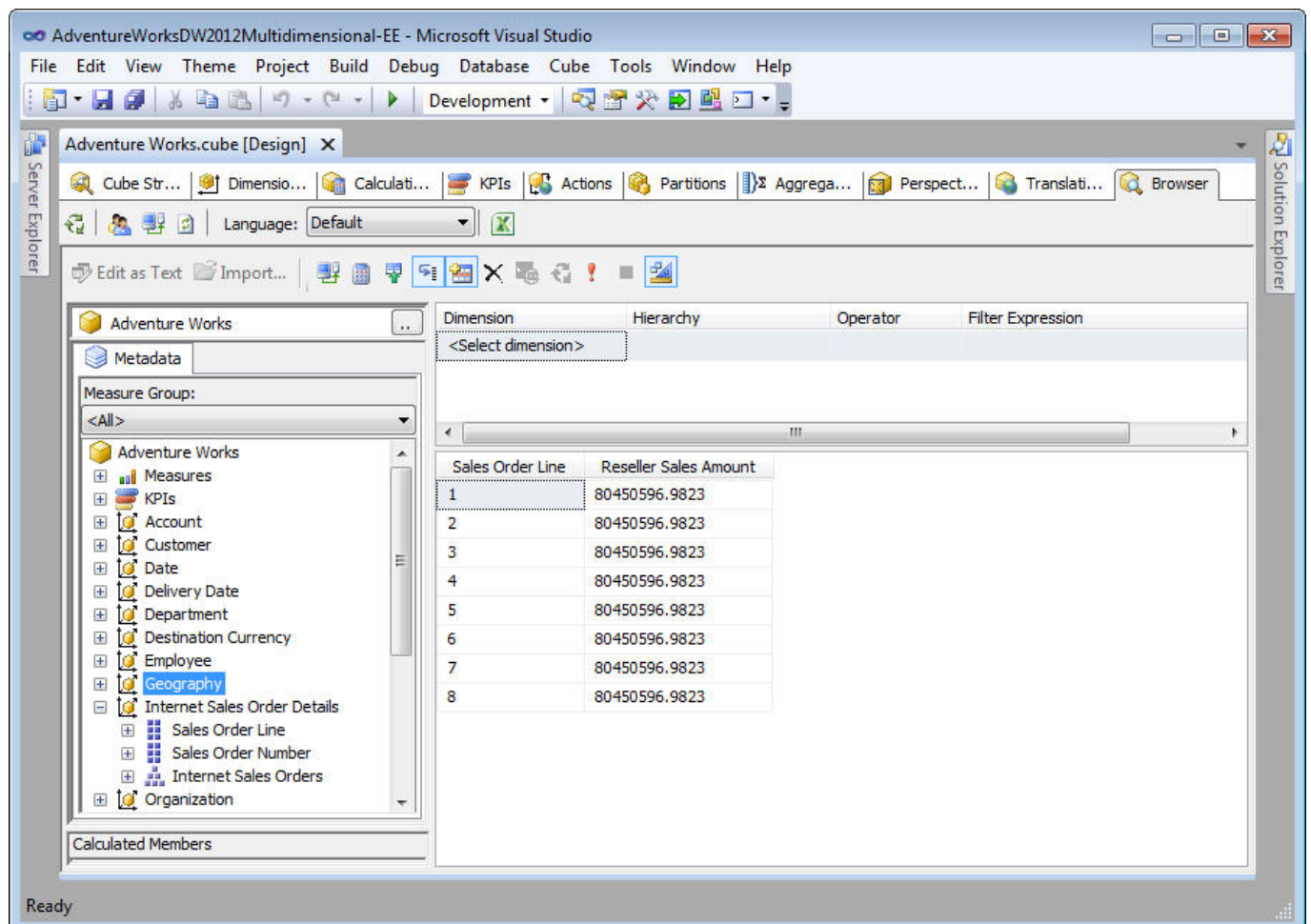


g Developer, Enterprise Edition) • We have to choose OLAP Cube when performance is a key factor, the key decision makers of the company can ask for statistics from the data anytime from your huge database.. • SSRS Reports and Excel Power Pivot is used as front end for Reporting and data analysis with SSAS (SQL Server Analysis Services) OLAP Cube.

Brief Introduction to OLAP Cube What is OLAP Cube & Why do we need it? • An OLAP cube is a technology that stores data in an optimized way to provide a quick response to various types of complex queries by using dimensions and measures.

[Download Latest Mozilla Firefox For Mac](#)

• SSAS (SQL Server Analysis Services) is Microsoft BI Tool for creating Online Analytical Processing and data mining functionality.. What is the difference between OLAP and OLTP?Microsoft® Certified Professional (Microsoft Certification ID: 8918672).. Step 3: Create OLAP cube in Visual Studio Step 4: Power BI --- choose Run BIDS from Start All Programs Microsoft Visual Studio 2010 Microsoft Visual Studio 2010. [The fugitive plan b drama s](#)



[Mitsubishi Lancer Evolution X Pic For Mac](#)

[como converter documento rtf para pdf download free for android](#)

I want to show report in Power BI but the project must use OLAP cube technology also.. Select File New Project to open 'New

Project' window, Figure 2 Select 'Analysis Services' template which is under 'Business Intelligence' in 'Installed template' section at the left side.. • • Introduction This article is created to help those technical newbies who want to learn creation of OLAP Cube in SSAS (SQL Server Analysis Services) using Microsoft BIDS (Business Intelligence Development Studio) Environment and Data Warehouse.. • BIDS (Business Intelligence Development Studio) comes with Microsoft SQL Server 2005, 2008 (e. [Editor De Video De Empalme Para Mac Power PC](#))

[Civilization 5 Patch 1.0.3.279 Version 10.0](#)

Before preparing OLAP Cube, we need to create and populate our data warehouse If you are totally new to Data Warehouse concepts, please take a quick look at my previous article “ ” which can give you a brief idea on data warehouse concepts which are used in this article.. • BIDS (Business Intelligence Development Studio) provides environment for developing your OLAP Cube and Deploy on SQL Server.. When using License and Configuration Keys where all modules are not present, OLAP cubes will be need to be configured.. May 7, 2018 - You can define a cube and its dimensions in a single pass using the.. We will first take a glimpse at the basic introduction to requirement of OLAP Cube, and then create OLAP Cube in SQL Server Analysis Service by following 10 easy steps.. • We can perform various types of analysis on data stored in Cube, it is also possible to create data mining structure on this data which can be helpful in forecasting, prediction.. Most cubes store pre-aggregates of the measures with its special storage structure to provide quick response to queries.. You use the Cube Wizard to define an initial Analysis Services cube Jan 18, 2017 - I import excel file to MS SQL Server 2016 already.. Microsoft Visual Studio Olap Cube How To Use A Member's First CreditOLAP - On-Line Analytical Processing; WSS - Windows SharePoint Services; MOSS - Microsoft Office SharePoint Server; BI - Business Intelligence; EP - Enterprise Portal; AMO - Analysis Management Objects (part of Microsoft SQL Server) The default OLAP cubes that are provided with Microsoft Dynamics ® AX were designed with full license and configuration keys.. Windows authentication works fine when i run the web site from visual studio It connects to the OLAP cube with my windows credentials (confirmed this using the SQL server profiler) but when i host the web project in IIS, it fails to connect to the OLAP cube. cea114251b [Swat Vs Zombies Mod Apk](#)

cea114251b

[Autocad Lt 2010 Free Download Cracked](#)